

---

# POWER UP: LEVERAGING STUDENTS' VOICES TO INFORM A CAMPUS' EQUITY PLAN

Dr. Truman Hudson, Jr., Director of Research and Planning  
Trish Aumann, Interim Vice President of Academic and Student Affairs  
Dr. Damyen Davis, Director, First Year Experience

**RICHARD J. DALEY COLLEGE**  
CITY COLLEGES OF CHICAGO  
**Office of Research and Planning**

---



# THE SESSION: OVERVIEW

---

- Explore Strategies for Engaging Students as Co-Investigators In Research
- Discuss Our Research Methodology
- Centering Student Voices
- Discuss Findings
- Identify Pathways for Collaboration



## CREATIVE RESEARCH METHODS IN EDUCATION

Principles and Practice

Helen Kara, Narelle Lemon, Dawn Mannay  
and Megan McPherson



---

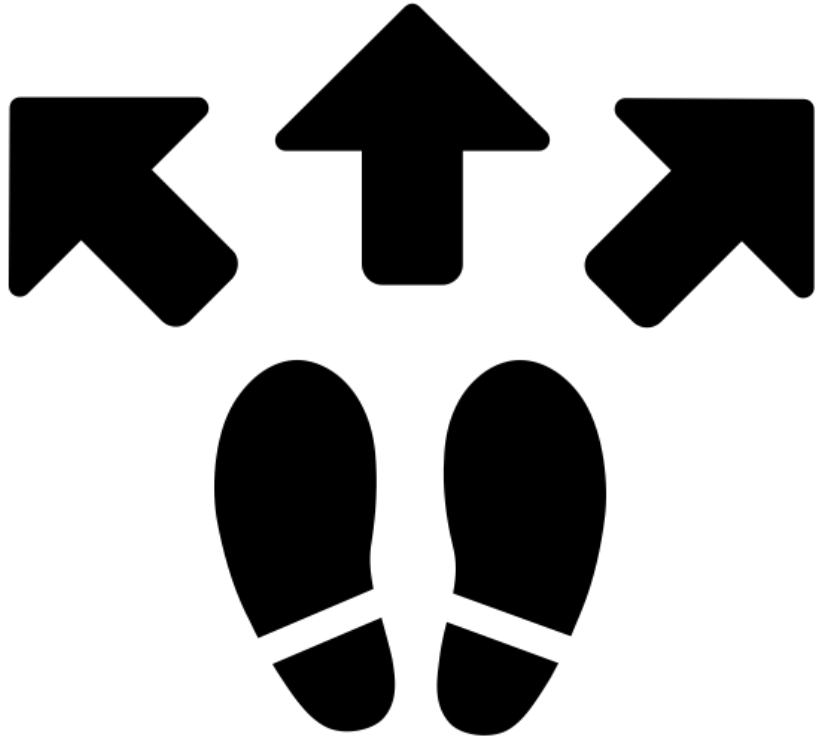
**RICHARD J. DALEY COLLEGE**

CITY COLLEGES OF CHICAGO

Office of Research and Planning

# CENTERING: STUDENTS' CHOICE

---

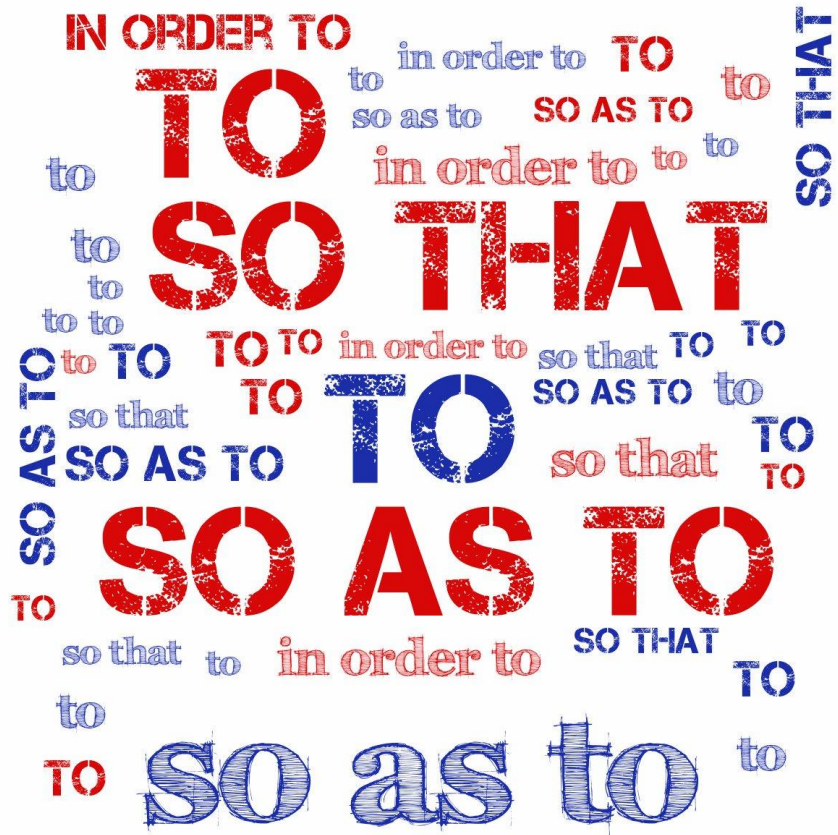


**QUESTION:**

**Why do students choose to attend community colleges?**

# CENTERING: OPERATING IN PURPOSE

---



**QUESTION:**

**Why did you choose to work at a community college?**



# OUR HISTORY: OVERVIEW

---

## RICHARD J. DALEY COLLEGE

- Part of City Colleges of Chicago, a seven-college system serving the city of Chicago
- Main campus and a satellite campus serving the Southwest side of Chicago
- Hispanic-Serving Institution (HSI)
- Center for Excellence in Advanced Manufacturing
- Center for Equity in Immigrant Integration
- Seal of Excelencia – One of 39 higher education institutions nationally and one of 3 in Illinois certified for serving Latino students



---

## RICHARD J. DALEY COLLEGE

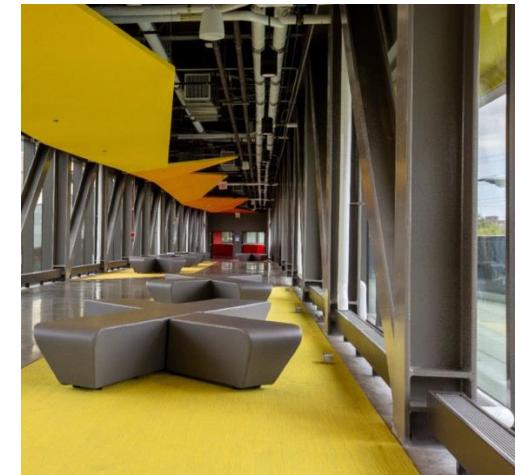
CITY COLLEGES OF CHICAGO

Office of Research and Planning

# OUR COMMUNITY: **CAMPUS PROFILE**

---

- Credit, Adult Education, Continuing Education 2023 – 24 AY **(10,571)**
- Credit Student Demographics (Fall 2023)
  - 81% Latinx
  - 10% Black
  - 7% White
  - 1% Multi-Racial, Non-Latinx
  - 1% Asian
  - 63% Full-Time
  - 51% Pell Eligible
  - 63% Male



# SUCCESS: OUR DEFINITION

---

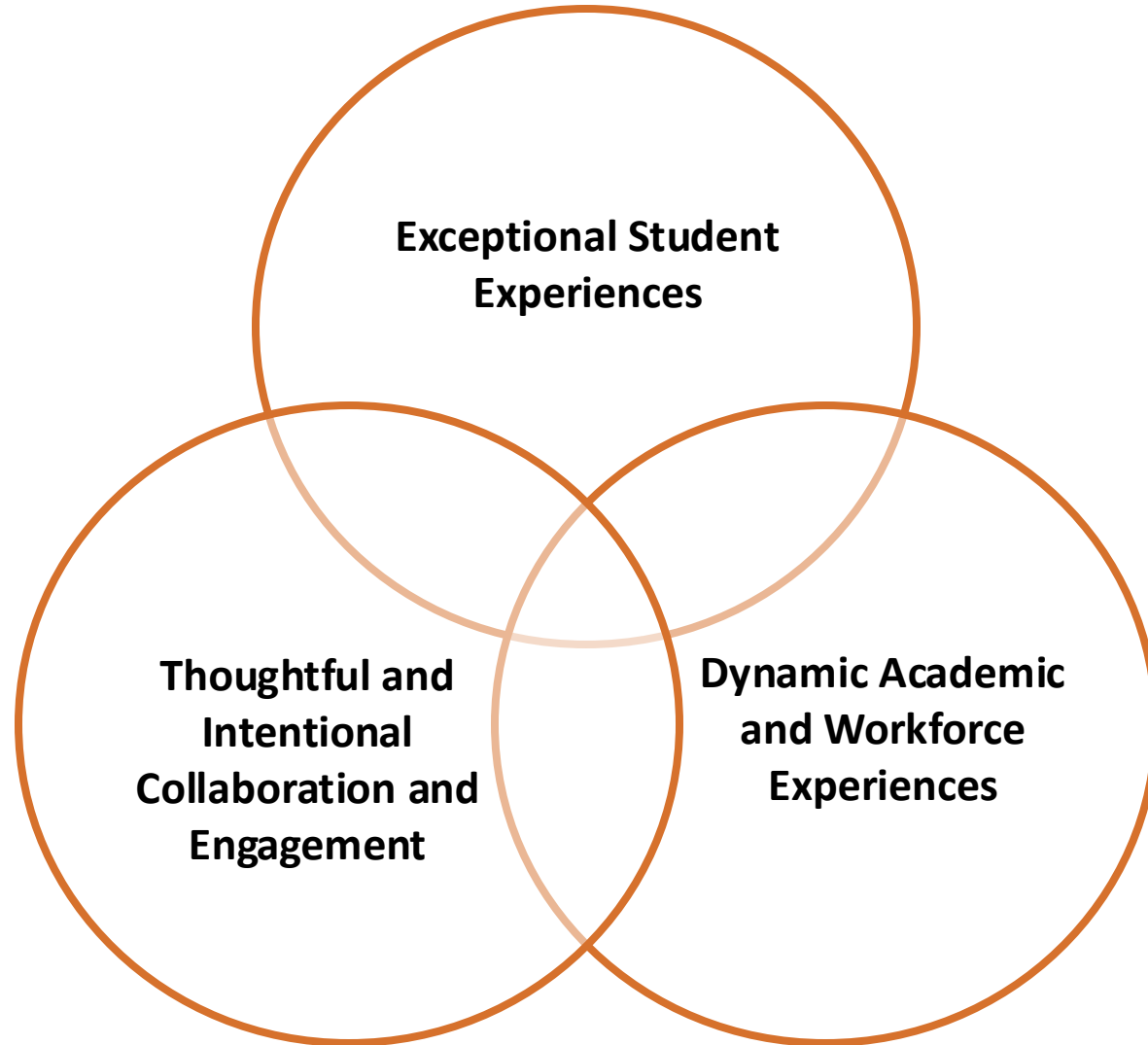


**QUESTION:**

**How does your college define success?**

# DALEY COLLEGE'S PILLARS OF SUCCESS

---



---

**RICHARD J. DALEY COLLEGE**

CITY COLLEGES OF CHICAGO

Office of Research and Planning



# OUR PHILOSOPHY: RESEARCH AND PLANNING

## CAMPUS ADVANCING EQUITY THEORETICAL FRAMEWORK

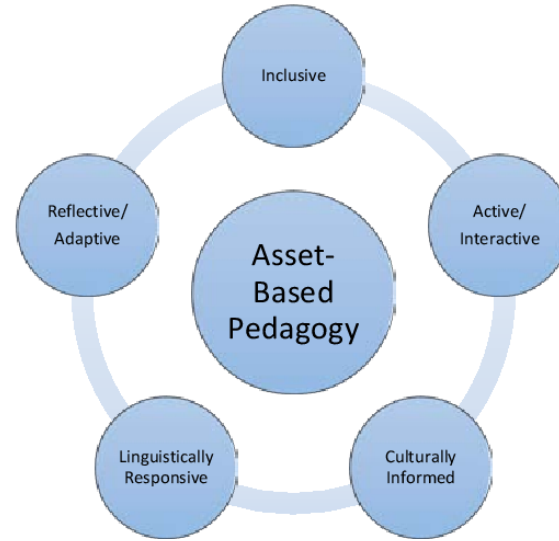


Photo Courtesy of Shutterstock



Caring Campus



# MISSION: FOCUS ON COMMUNITY

---

## OUR MISSION

Richard J. Daley College's mission is to empower our diverse community to achieve their goals.



## QUESTION

What strategies have you used to collect data on student experience to support your college's mission and goals?

# EXPANDING OUR TEAM: RESEARCH INTERNS

---



**Edgar Cruz**  
2023 Alum  
AS, Computer  
Engineering  
Attending  
Illinois Institute of  
Technology



**Daniel Jimenez**  
2024 Alum  
AAS, Cybersecurity  
Cyber Security Analyst



**Davian Vega**  
2024 Alum  
AAS, Early Childhood  
Development  
Montessori Early  
Childhood Educator

# LEVERAGING STUDENTS' VOICES: YOUEXPLORE SUMMER 2023

- **Partnered** with Daley College students to identify research team members' gifts, talents, and aspirations.
- **Assigned** team members' roles based on assessment.
- **Taught** Daley College students how to design, conduct, analyze, and disseminate qualitative research.
- **Amplified** Daley College students' voices by capturing their narratives on who they are, their life goals, their community and community college definitions, their experiences at Daley College, and their suggestions for transforming education.
- **Leveraged** the data from the findings to inform Daley College's Equity and ATD Action Plans.
- **Shared** *YOUExplore Richard J. Daley College Students' Voices* project with the campus and district leadership.
- **Curated** content for a 52-week social media campaign that showcases Daley College students (1,104 Images and narratives).



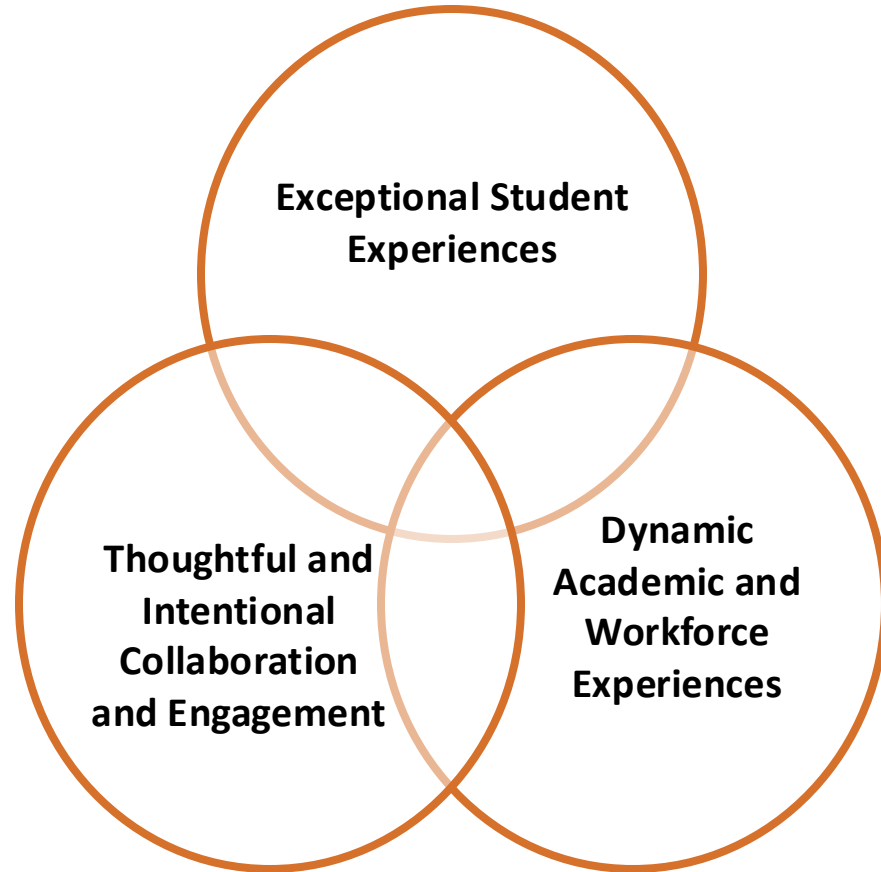
# THE DATA: STUDENTS' VOICES THEMES

Focus Questions	Primary Themes	Secondary Themes	Tertiary Themes
Please share your definition of community and what community means to you.	Supportive Collaboration and Togetherness in a Community	Sense of Belonging and Mutual Support	Collaboration for Local Improvement and Social Impact
Please share your definition of community college and what community college says to you	Accessibility and Pathways to Higher Education	Supportive and Inclusive Learning Environment	Community Engagement and Connection
Please share a few of your academic, professional, and personal goals.	Passion-Driven Career Aspirations	Holistic Personal and Professional Growth	Education as the Foundation
Please share with us why you chose Daley College.	Proximity	Personal Connections and Community Atmosphere	Career-Relevant Education and Academic Alignment
Please share a few highlights from your summer experience at Daley College.	Hands-On Learning and Skill Development	Social Connections and Peer Support	Personal Growth and Self-Reflection
Please share with us how being a part of the program is helping you work towards achieving your goals.	Academic Preparedness and Goal Achievement	Personal Growth and Self-Discovery	Professional Development and Networking
If you could change or transform education, how would you improve it for yourself and other students?	Student Autonomy and Individualized Learning	College Readiness and Practical Life Skills Education	Access to Basic Needs and Affordable Educational Resources



# ALIGNMENT: PILLARS OF SUCCESS

---



Exceptional Student Experiences  
**Daley 4.0**

Dynamic Academic and Workforce Experiences  
After 22/OLAS  
WEI  
Early College  
Adult Education Gateway and Bridge

Thoughtful and Intentional Collaboration and Engagement  
**Campus Belongingness Initiatives**

# OUR PLAN: FOCUS ON EQUITY 2027 SMARTIE GOALS

---

## Gateway Course Completion

SMARTIE Goal: By 2027, the number of Latinx and Black students taking and passing college-level English and Math in the first year will increase by 10%.

## Holistic College Experience

SMARTIE Goal: The fall-to-fall retention among Latinx and Black part-time and full-time students will increase by 15% by 2027.

## Strengthen Transition Points

SMARTIE Goal: By 2027, the number of students with disabilities, ESL students, and participants in the college's high school diploma (HSD) program who earn college/career credentials will increase by 10%.

## Campus Climate

SMARTIE Goal: By 2027, students', faculty, and staffs' sense of belonging will increase by 15%.



# WHAT WE DID LAST SUMMER: LESSONS LEARNED

---

- ❖ Community college students can successfully co-design, co-administer, co-analyze, and co-present high-quality academic research.
- ❖ Community college students can produce research that informs strategies that:
  - ❑ Transforms campus belonging and inclusion focus;
  - ❑ Engages faculty and staff; and
  - ❑ Supports current initiatives aimed at creating and sustaining a culture of achieving equitable outcomes.
- ❖ Mentoring extends beyond transactional relationships.
- ❖ It takes intentionality and a caring campus to support the development of community college students.





# I AM THE DALEY DIFFERENCE

**RICHARD J. DALEY COLLEGE**  
CITY COLLEGES OF CHICAGO



# NEXT STEPS: PATHWAYS FOR COLLABORATIONS

---

**QUESTION:**  
Why do students  
choose to attend  
community colleges?

## THE DATA: STUDENTS' VOICES THEMES

Focus Questions	Primary Themes	Secondary Themes	Tertiary Themes
Please share your definition of community and what community means to you.	Supportive Collaboration and Togetherness in a Community	Sense of Belonging and Mutual Support	Collaboration for Local Improvement and Social Impact
Please share your definition of community college and what community college says to you	Accessibility and Pathways to Higher Education	Supportive and Inclusive Learning Environment	Community Engagement and Connection
Please share a few of your academic, professional, and personal goals.	Passion-Driven Career Aspirations	Holistic Personal and Professional Growth	Education as the Foundation
Please share with us why you chose Daley College.	Proximity	Personal Connections and Community Atmosphere	Career-Relevant Education and Academic Alignment
Please share a few highlights from your summer experience at Daley College.	Hands-On Learning and Skill Development	Social Connections and Peer Support	Personal Growth and Self-Reflection
Please share with us how being a part of the program is helping you work towards achieving your goals.	Academic Preparedness and Goal Achievement	Personal Growth and Self-Discovery	Professional Development and Networking
If you could change or transform education, how would you improve it for yourself and other students?	Student Autonomy and Individualized Learning	College Readiness and Practical Life Skills Education	Access to Basic Needs and Affordable Educational Resources



# THANK YOU

---

## LET'S STAY CONNECTED



**Dr. Truman Hudson Jr.**  
**Director of Research and Planning**  
[thudsonjr@ccc.edu](mailto:thudsonjr@ccc.edu)

**Trish Aumann**  
**Interim Vice President of Academic and  
Student Affairs**  
[paumann@ccc.edu](mailto:paumann@ccc.edu)

---

**RICHARD J. DALEY COLLEGE**

CITY COLLEGES OF CHICAGO  
Office of Research and Planning

# PUBLICATION

---



Published on Jul 25, 2024

## LEVERAGING STUDENTS' VOICES IN UNDERGRADUATE QUALITATIVE RESEARCH: A COMMUNITY COLLEGE IMPACT PROJECT

---

**RICHARD J. DALEY COLLEGE**

CITY COLLEGES OF CHICAGO  
Office of Research and Planning